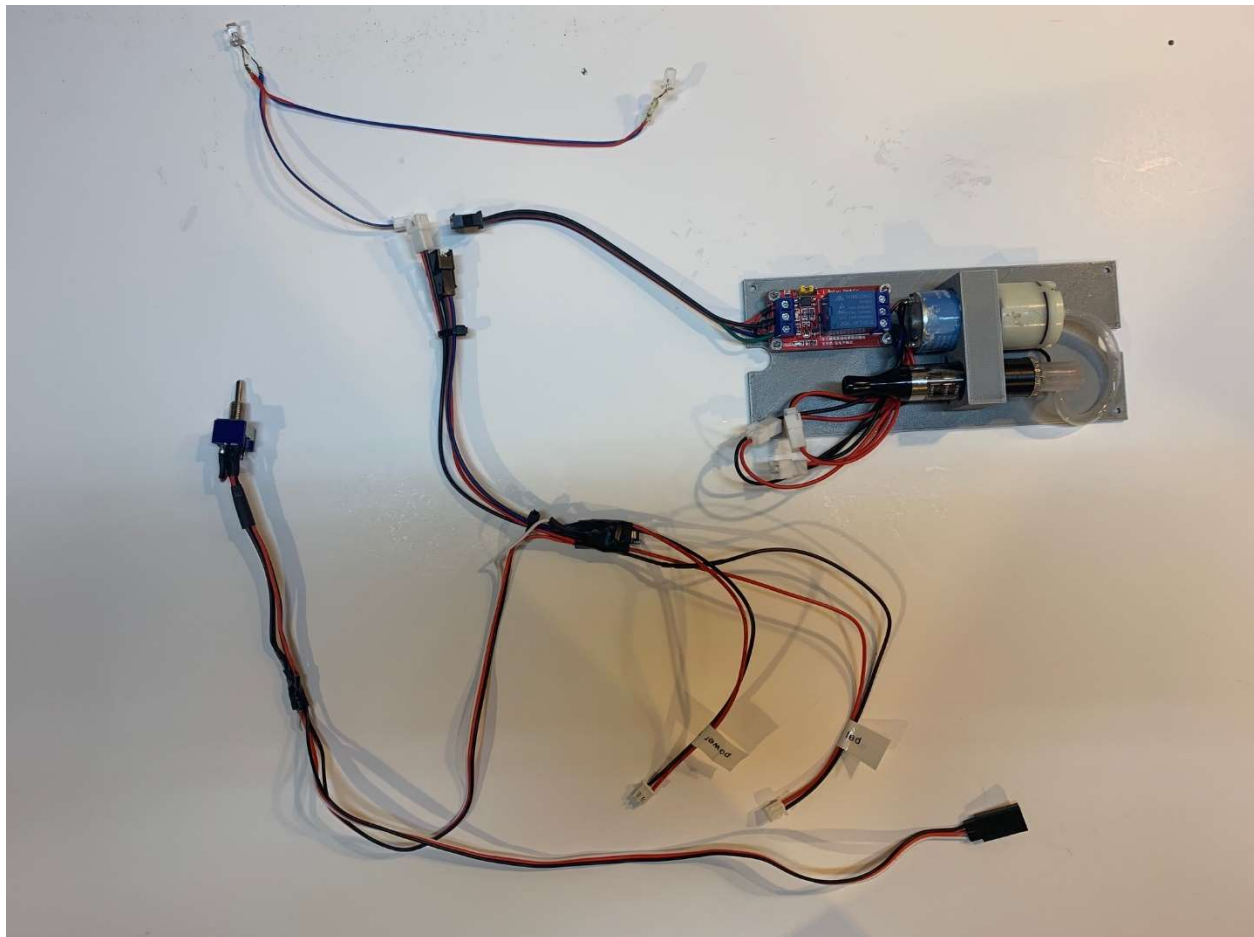


1. You will need a battery charger for the 6v, 1700mah NiMh battery. More than 6v will damage the components. If you later decide to upgrade to a higher voltage battery please connect a 5v/6v UBEC between the kit and the battery.
2. The vape coil is commonly found. Installed in the kit is a Kanger T2 1.8 ohm coil. 2.5 ohm coils are said to be ideal but I have not yet personally noticed a difference. No lower than 1.8 ohms is the important part.
3. The vape Juice is a 50/50 mix of Vegetable Glycerin and fog machine liquid. The more “foggy” the liquid the better.
4. Don’t run the effect for any longer than 20 seconds
5. Do not run the machine when it is out of fluid.
6. I designed the harness to allow you to place the battery connector anywhere you want. The battery ends up inside the trap and not easily removed.
7. I recommend drilling a small hole into the original battery compartment and situating the union of the battery and trap harness there. Your call.

To install:



Turn the switch to the position that illuminates the trap. Note this position.

Take off the wheels and unscrew the 4 screws holding the trap together.

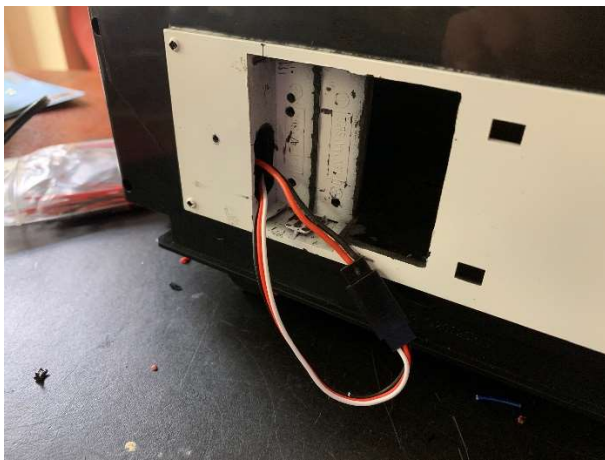
Remember which ports you unplug from.

Disconnect the battery wire from the Trap control board. Remove the AA batteries.

Remove the switch from the switchplate. This will be tucked inside the trap in the ON position. One position illuminates the trap lights all the time, the other only when activating. It is up to you to choose.

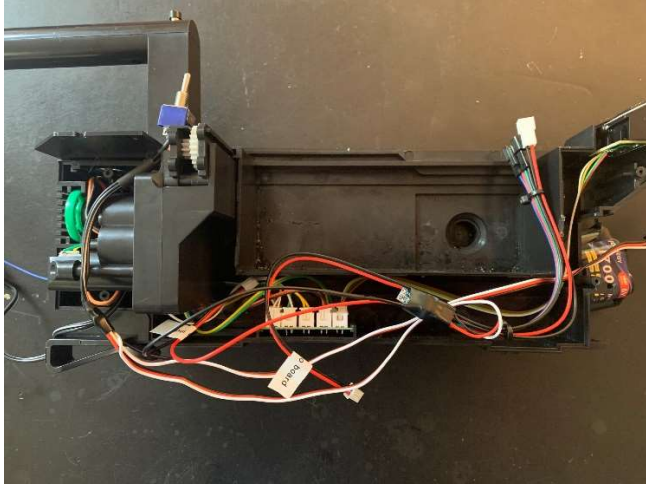
Disconnect the wire to the green compartment LED and remove the wire and LED. You will use this later.

Cut a small hole in the battery compartment to pass the battery connection through. You will use this to recharge the battery.

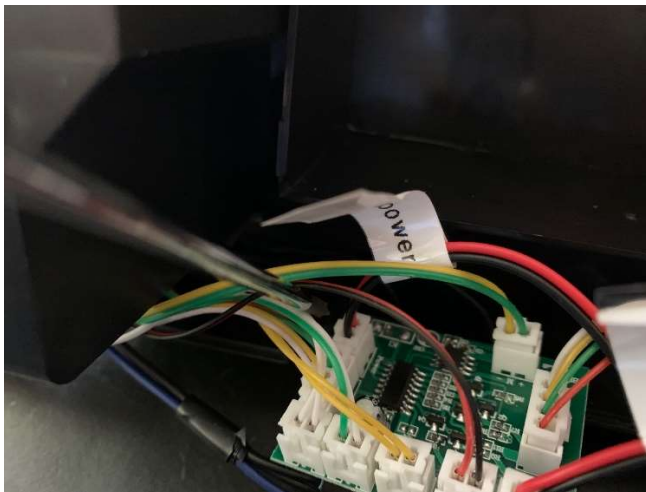


In the last picture you can see where to place the battery. It will fit snugly.

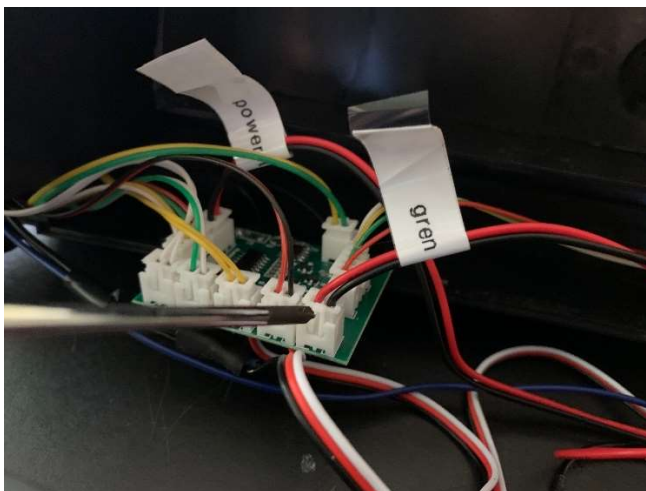
Lay the wiring harness over the trap as shown below (your harness may look slightly different):



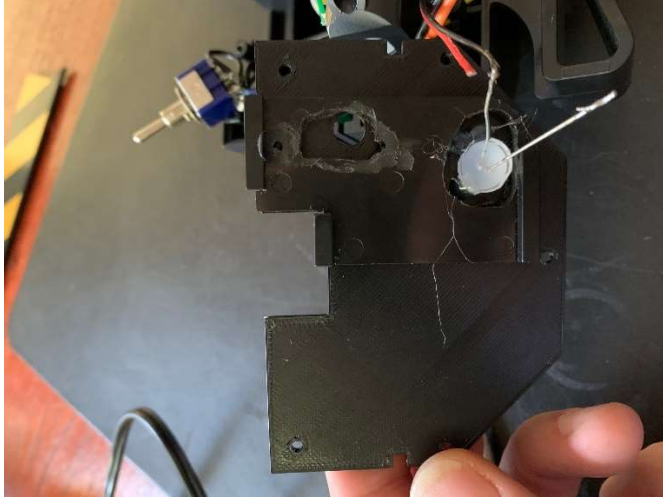
Connect the plug labeled “Power to Board” to the port you removed the battery connection earlier.



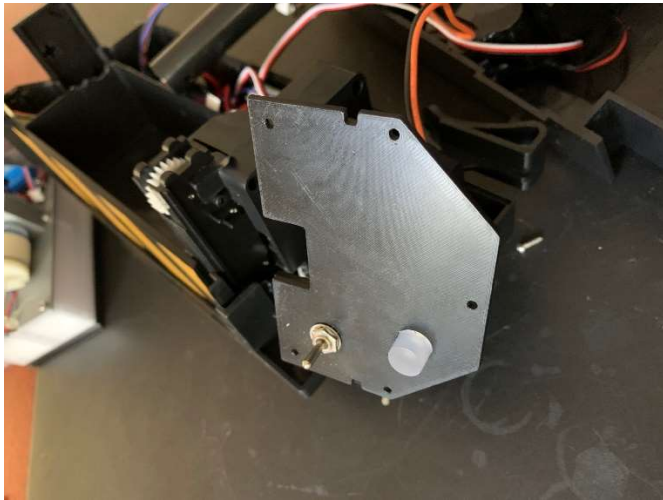
Connect the plug labeled “Green LED” to the port you disconnected the Green LED wiring from earlier.



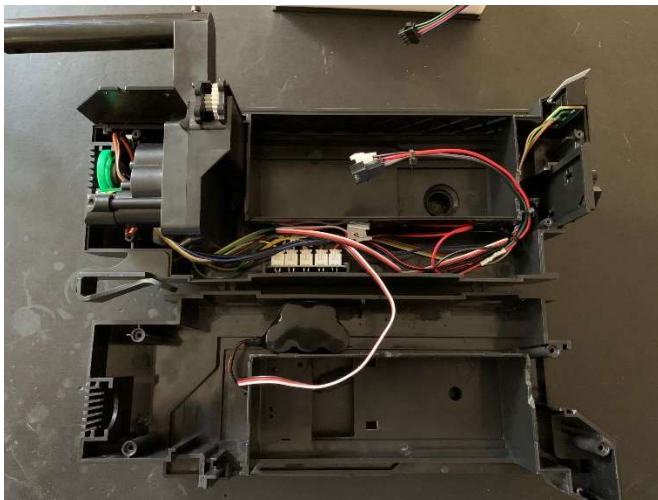
Included is a trim piece to mount the new switch. You will need to slightly trim the switchplate the original switch was mounted to, as shown or similar to allow the new switch to fit.



Glue in the LED and mount the switch to the plate.



Begin to reassemble your trap ensuring the wiring looks as follows:



The harness should fit tightly through the hole originally occupied by a compartment LED.

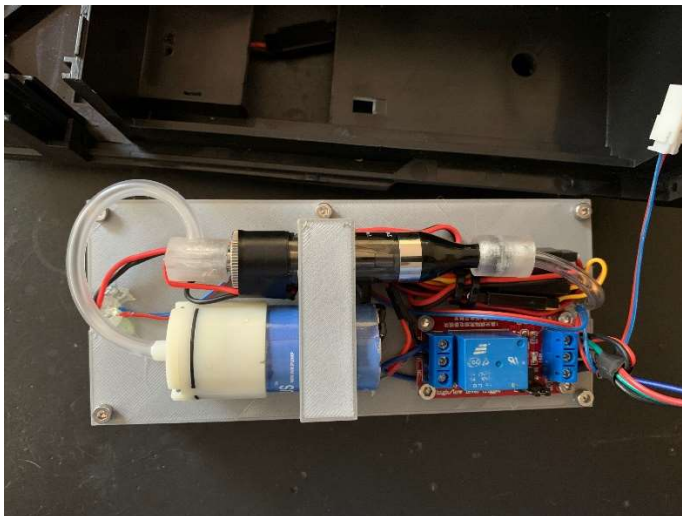
Screw the trap halves together but do not snug the top two screws just yet.

Your trap should look like this inside without all the extra holes.



Optional:

Place the original compartment LED's inside the openings in the underside of the chamber. Connect this wire to the corresponding plug. Hard to see but it is the blue and red wire pair with white plug.



Connect the 4 PIN plug to the corresponding receptacle in the wiring harness:



Begin to fit the smoke compartment into the trap ensuring no wires or hoses are caught around the edges. The harness will connect on the side shown, and will have just enough room to clear the side of the smoke add on kit.

Slide it down until the top piece settles into place. Tighten the top two screws until the smoke chamber is held in place.



Attach the remaining pieces to the trap. Turn on, Enjoy. One direction runs the smoke when triggered, the other all the time (hot trap).

